

TOOLS

HOLE CUTTER

Both styles cut a 4 1/2" diameter by 7" deep hole. The #26002 has a foot ejector and the #26004 has a hand lever plug ejector.

SOD TAMPER

Useful for laying sod and backfill tamping. Square cast iron with an extra large diameter wood handle.

Stock No.	Description
26310	10" Square, 18 lbs. Including Handle
26315	Handle Only

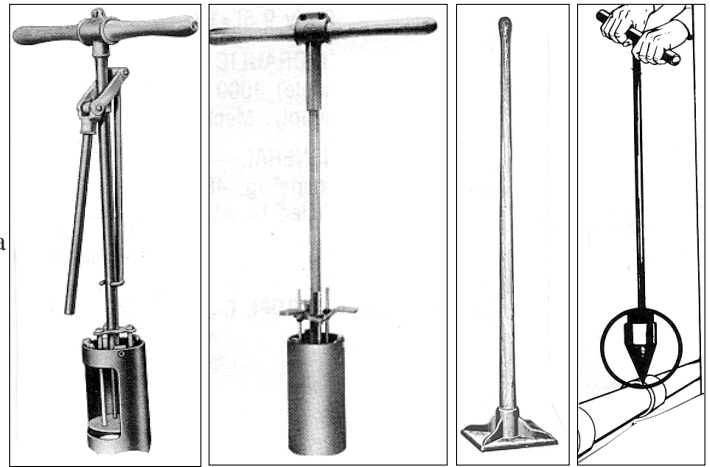
FINDER PROBE

3/8" Steel Shaft, 1/2" Stainless Steel tips.

Stock No.	Description	Stock No.	Description
26403	3 Foot Probe	26406	6 Foot Probe
26404	4 Foot Probe	26410	Replacement Tips
26405	5 Foot Probe		

SOD LIFTER

Polished blade and 18" shank forged from solid steel. Fire hardened ash handle 32" long. Tubular ferrule. Shank is set at proper angle for straight under-cut. Stock No. 23100.

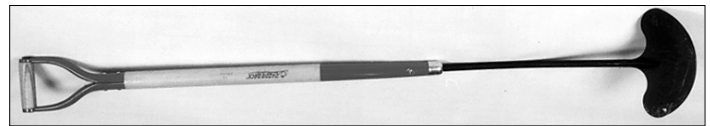


26004 26002 26310 PROBE

GRAVE CRIBBERS

Built of heavy cast iron. Can be adapted to cribbing a small portion or the whole grave. Made in two sizes and weigh only 12 1/2 lbs.

Stock No.	Description
64102	Extends 29" to 40"
64103	Extends 33" to 44"
64104	Special offset wrench if desired

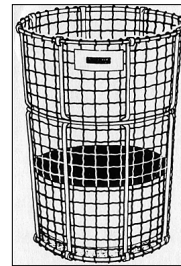
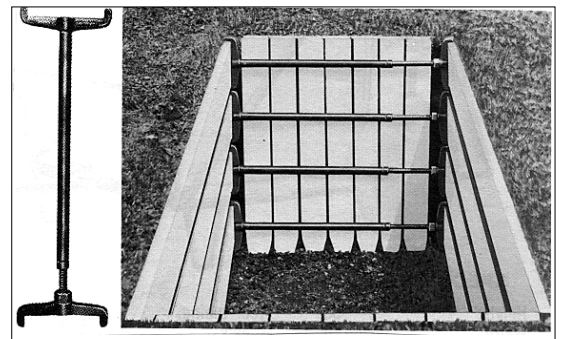


23100

TRASH RECEPTACLES

Available in heavy gage woven wire mesh, wood slat or expanded metal versions to fit every need. All mesh baskets are available in galvanized or green polyester coatings. **(Please specify coating when ordering.)** All wood slat baskets include a 22 gallon plastic liner and are 25" high with a 21" top. The 14 gage expanded metal series hold 13 gallons and come in a green polyester finish. They are 19" high with a 14" top. All permanent mount baskets include a 24" pipe / base plate.

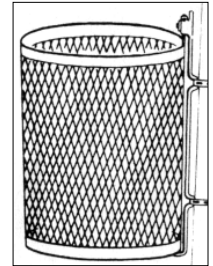
Stock No.	Description
Wire Mesh Series	
S83CW	46 Gal., 8 gage mesh, 22" top, 34" high, 3.5" deep bottom pan.
S84BW	25 Gal., 10 gage mesh, 18" top, 31" high, sheet metal pan.
S95BW	35 Gal., 10 gage mesh, 21" top, 28" high, 8" deep bottom pan.
S76W	15 Gal., 10 gage mesh, 16" top, 22" high, sheet metal pan.
Wood Slat Series	
SNW1RW	Freestanding Portable redwood.
SNW1RSW	Permanent, redwood.
SNW1PTW	Portable, pressure treated wood.
SNW1PTSW	Permanent, pressure treated wood.
Expanded Metal Series	
S19PRW	Pole mounted, removable.
S19PDBW	Pole mounted, drop bottom.
S19APW	Free standing.
S19SRW	Permanent ground mount.



S95BW



SNW1RW



S19PRW

NYLON TRIMMER CORD

Recommended for all trimmers. Packaged in five pound spools.

Stock No.	Description
13095	.095 Diameter Trimmer Cord
13105	.105 Diameter Trimmer Cord
13130	.130 Diameter Trimmer Cord

